



KRISTINA VIIRPALU

KV is an exclusive luxury brand for a passionate modern woman. Our exquisite and feminine collections celebrate strength and timelessness through opulently detailed couture pieces giving exceptional feeling while wearing one.

The patterns and technologies used for KV's knitted and embroidered couture pieces are unique and unknown in the rest of the world. This makes our luxuriously detailed garments also into precious pieces of art, and into living mementos of Estonia's amazing folk culture.

KV's embroidered bodies are created one pearl and stitch at a time, and take up to couple of weeks to finish. When the designer has come up with the design and pattern, she hands it over to our masterful embroiderer who creates the custom pattern using various laces, wool, beads, pearls and ribbons.

Each of KV's couture dresses is unique. One exquisite gown usually takes 2 -3 months to finish and three masterful craftsmen to give them their final, delicate form. At first, the gown gets hand-knitted by the craftsmen of this unique craft in Haapsalu. The dress is then sent to KV's Atelier in Tallinn where the seamstress shapes it into the required shape using the finest fabrics. The last person to work on the dress is the embroiderer who adds the necessary amount of pearly exuberance to the gown.

KV's jackets, coats, trousers and skirts are the pinnacle of meticulous tailoring. All items are unique luxury garments that are handmade in our Atelier in Tallinn's Old Town.



KRISTINA VIIRPALU



DRESS BELLA

Transparent stretch-tulle dress decorated with hand-crocheted cotton yarn details and beaded embellishments. Crochet patterns are inspired and adapted from Estonian National Costumes.

HEADBAND

with feathers on chrinoline





DRESS DEBORA

Transparent stretch-tulle dress decorated with hand-crocheted cotton yarn details and beaded embellishments. Crochet patterns are inspired and adapted from Estonian National Costumes.





DRESS AMBRA

Transparent stretch-tulle dress decorated with hand-crocheted cotton yarn details and beaded embellishments. Crochet patterns are inspired and adapted from Estonian National Costumes.





DRESS CECILIA

Transparent stretch-tulle dress decorated with hand-crocheted cotton yarn details and beaded embellishments. Crochet patterns are inspired and adapted from Estonian National Costumes.





DRESS MARGE

Hand-knitted fine wool frilled-bottom dress with fringe decorations. Top part is transparent stretch-tulle decorated with silk lace and hand embroidered yarn and glass bead embellishments. Lacy knitting pattern is inspired by Haapsalu shawl – a piece of art from hand-craft traditions in Estonia.

HEADBAND

decorated with lace on chrinoline





JACKET RAGNE

Lined tailored jacket. Press button closure and zippered sleeves. Sequin lapels and front to back double look.

HEADBAND

covered in laces



TROUSERS KERLI

Silk satin trousers with side pockets. Lace decorated transparent mesh cutout detail on back and closure at front.

HEADBAND

covered in laces





TROUSERS PILLE

Cream white tailored loose fit silk trousers with a cutout beaded back detail. Invisible zipper and hook and eye closure at front.

HEADBAND

decorated with feathers and lace on chinoline



TROUSERS RITA

Creamy white sequin covered loose leg trousers with cutout back and calf details, decorated with lace and beading.

HEADBAND

decorated with feathers and lace on chrinoline



HEADBAND
in lace





DRESS ARMILDE

Transparent stretch-tulle dress covered with delicate lace and hand embroidered yarn and glass bead embellishments.

Embroidery patterns are inspired and adapted from Estonian National Costumes.

HEADBAND

decorated with feathers and lace on chrinoline

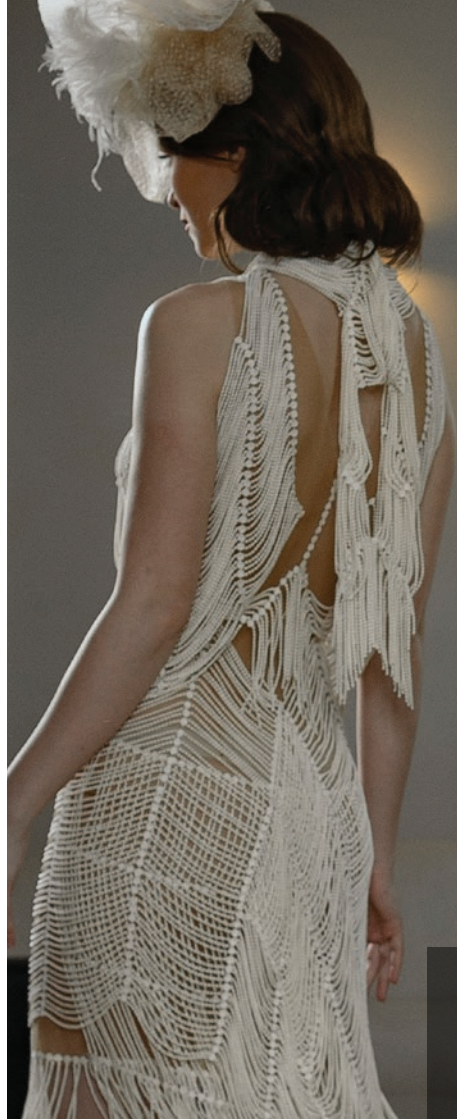


DRESS

Wool, polyester, beads

HEADBAND

with feathers on
chiriline



DRESS LINDA

Fringe-decorated stretch-tulle
base knee length cocktail dress.

HEADBAND

decorated with
feathers and lace on
chiroline





DRESS

cotton lace, crinoline and hand embroidered
yarn and glass bead embellishments



JACKET

wool 98%, elasthane 2%, lace, lining viscose





BODYSUIT GERDA

Transparent sleeveless stretch-tulle bodysuit decorated with lace.

TROUSERS

100% polyester, stretch -tulle, lace



BODYSUIT GERDA

Transparent sleeveless stretch-tulle bodysuit decorated with lace.

(+372) 55 948 342

info@kristinaviirpalu.com



KRISTINA VIIRPALU

www.kristinaviirpalu.com

 KV Couture

PRESS ENQUIRIES

siim@siimkohv.com